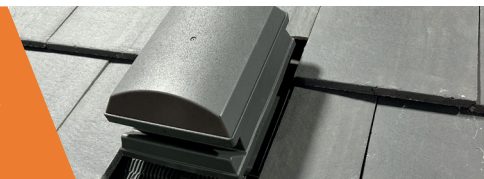
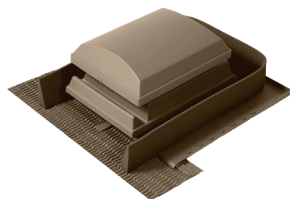


## RussVent P13 Universal MHVR Terminal



### Components

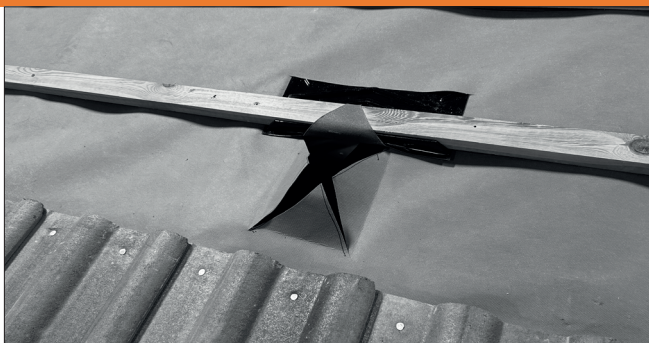


P13 RussVent unit



Underlay Opening Protector

### Step 1



Decide on a suitable position for the vent between the rafters and the tiling battens.

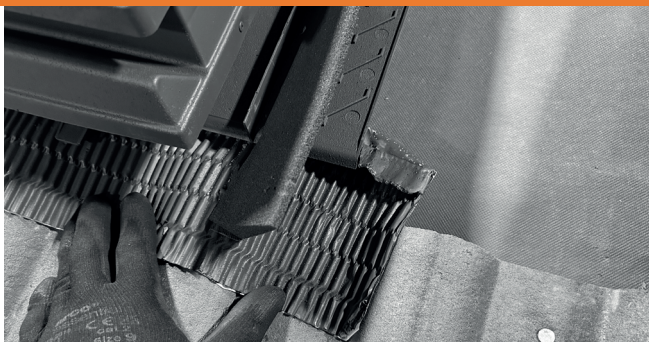
Lay the tiles up to the course below this position. Cut an X in the underlay and fold the flap upwards and outwards. Make a slit in the underlay above the tiling batten, slide the Underlay Protector under the batten and into the slit until the upstand is against the back of the batten.

### Step 2

Fit the vent in position and nail to the batten through the two fixing holes using two 20mm x 3.35mm aluminium alloy nails (not provided).



### Step 3

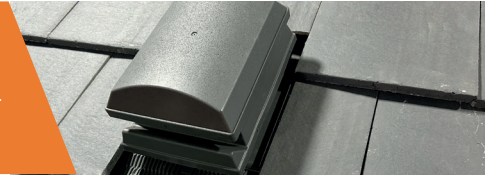


Remove the protective backing from the front apron.

Ensure the tiles below the vent are clean, dry and dust free.

Dress the front apron to suit the profile of the tiles below to ensure a weather-tight junction.

## RussVent P13 Universal MHVR Terminal



### Step 4

Lay the next course of tiles, overlapping the vent Tile on each side and compressing the foam filler. It may be necessary to remove the adjacent tile nibs to prevent tiles from kicking up. Screw down adjacent tiles where necessary (see table at end).

Any tiles needing to be cut along their length should be done such that their cut edge sits just outside the upstand / weather bars running down the Vent tile.



### Step 5



Lay surrounding tiles as per fixing specification (available at [www.russellrooftiles.com/fixing-specification](http://www.russellrooftiles.com/fixing-specification))

When positioning the tile directly behind the vent a minimum gap of 15mm must be maintained at the back of the cowl.

### Notes

| Countersunk Pozi-drive Stainless Steel Screw Sizes |              |                  |              |
|--|--------------|------------------|--------------|
| Natural Range                                      |              | Commercial Range |              |
| Galloway   | 40mm x 4.5mm | Double Roman     | 40mm x 4.5mm |
| Lothian  | 40mm x 4.5mm | Grampian         | 50mm x 4.5mm |
| Moray  | 40mm x 4.5mm | Highland         | 50mm x 4.5mm |
| Polden   | 40mm x 4.5mm | Pennine          | 40mm x 4.5mm |

- Not Suitable for use with Lothian 145 or Plain Tiles.
- Pitch range: 22.5° – 50°. (for pitches below 22.5° please contact the Technical Department)
- Small cuts should be secured in accordance with the Fixing Small Interlocking Tile Cuts Data Sheet.
- Fixing Small Interlocking Tile Cuts Data Sheet available at [www.russellrooftiles.com/technical/data-sheets](http://www.russellrooftiles.com/technical/data-sheets)
- Fixing Specification available at [www.russellrooftiles.com/technical/fixing-specification](http://www.russellrooftiles.com/technical/fixing-specification)